

Art Bailey- Art 1-4 Drawing an eye using a circle

This is the system of drawing an eye that I use. Start by thinking of the eyeball. It is a large three dimensional object sitting inside the skull that the eyelids lay on. If you keep the form of it in mind, it will help stop you from drawing flat, unrealistic eyes. Add the iris and pupil. These should be round. Using a compass or a circle template works best. If you don't have these, do your best at making the circles round. The eyeball circle should be at least two inches wide. Don't make it too small. The iris takes up half of the eyeball space. The pupil and iris are centered with in the eye ball. Use pencil.



The tear duct sits outside of the “eyeball” The top lid goes over the iris or cuts the iris at the top. The bottom lid is right under the iris or the iris sits on the bottom lid. The eye shape is up to the artist. Look in the mirror and copy your eye shape. Notice how the size of the eyeball dictates where the eyelids end. The tear duct falls to the side of the eyeball but inside of the eyelids.

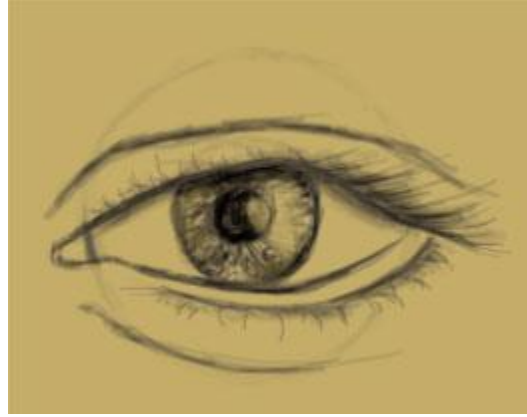
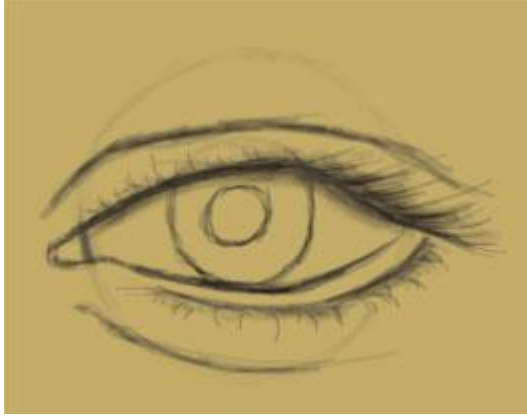
Eyelids have a thickness to them that we cannot ignore, and usually when looking at someone you can see the thickness to their bottom eyelid. The upper eyelid also has a thickness, which we cannot see, we know is there because of the shadow it casts onto the eyeball.



The eyelid also usually folds and creates creases and wrinkles. We need to add these as well because they give even more character to the eyes. Be careful not to draw these in too harshly, examine your subject closely and draw lines in the skin delicately. Remember that we are made up of shadows and light instead of harsh lines.

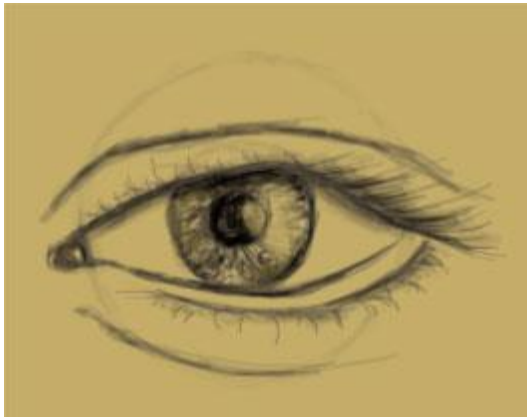
I
n
f
o
r
m
a
t
i
o
n

Eyelashes are very delicate hairs, so we also refrain from drawing harsh stiff lines for them. Use some soft lines, some shadows, and examine your subject to see where you can see the most eyelashes. Usually when you are looking at someone straight on, you will mostly be able to see the eyelashes at the outer edges of the eyelids. Also make sure to not draw eyelashes into the inner thickness of the bottom eyelid.



The colored part of the eye is called the iris, and the black part is the pupil. Look at your subject closely and notice where the lights and shadows fall on the iris and pupil. The texture of the iris is usually not very harsh. Correctly placed highlights and shadows will give you depth and form, keeping it from looking flat. (The iris may have lines that resemble the spokes of a wheel. Blend these with a blending stump.)

We can't forget the tear duct. This is also not a flat object and will have shadows and highlights because it is behind the eyelids.



The “white” of the eyes is never perfectly white, because it is actually a round object. Remembering the initial eyeball, add shadows to the edges of where the eyelids envelope the eyeball. Look at your subject's eyes and capture the light that is hitting the eyes, as well. The eyebrow is feathered along the eye socket ridge of the skull, a little above the eyeball. This depends on the age of the person and how loose the skin has become.

Here are two youtube videos that are very helpful. Please take the time to watch them.

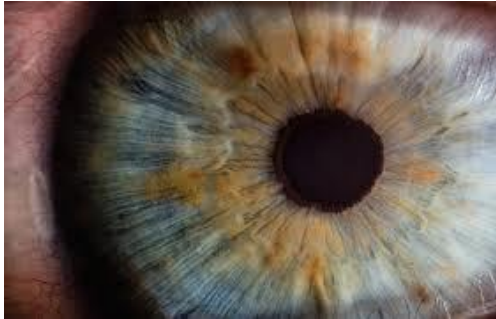
<https://www.youtube.com/watch?v=UL6QxeVIRrQ>

how to draw a realistic eye narrated step by step - circle line art school

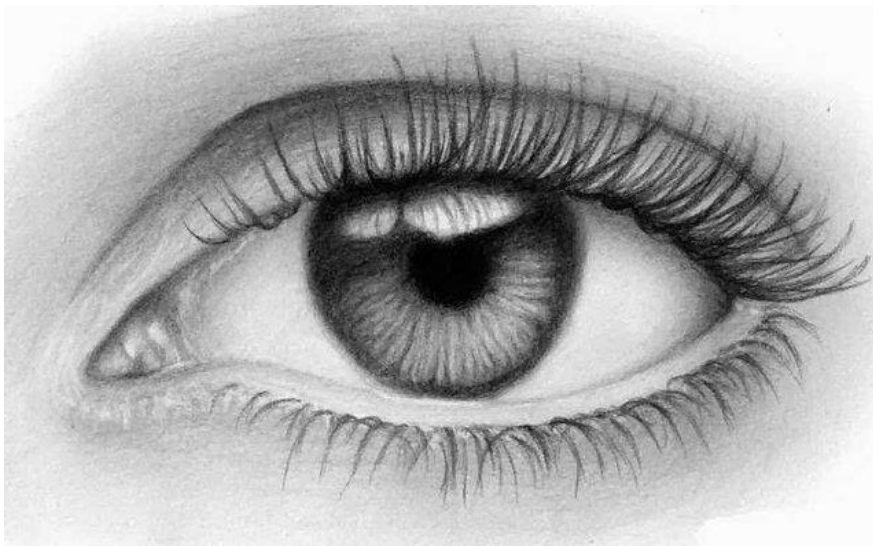
<https://www.youtube.com/watch?v=zqNZ9df0tho&t=1614s>

how to draw hyper realistic eyes step by step -rapid fire art

Iris: The Iris works like a camera aperture. The lines in the iris should look like spokes in a wheel. They should visually go through the center of the pupil.



The eyebrow: The eyebrow is placed right above the top of the circle that is the eyeball.



<https://steemit.com/teardrops/@asma27/drawing-realistic-eyes-with-pencils-teardrops-eb68dc5fb0615>

Notice the shadows at the edges of the eyeball.

The eyelashes overlap each other and come out of the outer shelf of the bottom eyelid.

The only white in the drawing should be the highlight in the iris.