

Bailey Art ITV Hair Classic approach. <https://www.youtube.com/watch?v=Wrw8nsDIsWc>

1. Outline the contour of the hair style



2. Make sections or groups of hair.

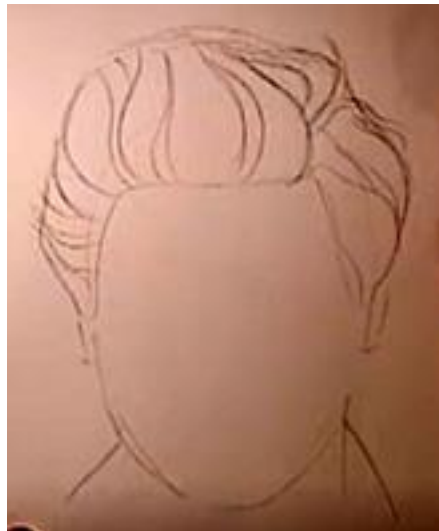


3. Break up the sections. All lines follow the growth of the hair.

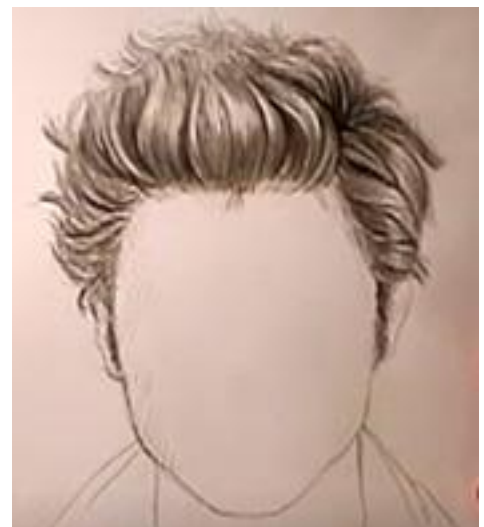
4. Use whites, grays and blacks for contrast.

5. Have hairs go outside the outline.

Video:



<https://www.youtube.com/watch?v=Wrw8nsDIsWc>



Hair – from virtual instructor.com <https://www.youtube.com/watch?v=PPz7xPDXkfw>

1. Draw a hair style outline that goes out further than the head line.
2. Draw sections or clumps of hair.
3. All lines go in the direction the hair grows.
- 4 Use many values.

